

# ZENVIDA

Product name: Zenvida Table Lamp  
SKU: 275-TBLTPRUSB01  
EMAIL: [priority@zenvidahome.com](mailto:priority@zenvidahome.com)  
TEL: 855-349-4327  
<http://bit.ly/ZENVIDA>



**\*\*\*WARNING\*\*\***

Power tools may strip bolts or screws. Hand tighten bolts to only about 75% tight. Do NOT completely tighten any bolt during assembly until all bolts and washers are connected. Having someone help you may make assembly easier.

Reaching out via product review, marketplace email, social media or leaving seller feedback may cause a delay in response. If you have questions about this product or need anything, please contact us. You are our priority!

# Three Way Dimmable Touch Control Table Lamp

## Product Specification

Voltage : 110V

Bulb Base : E26

Bulb wattage : Max 60W

Plug Format : US Plug

Material : Fabric & metal

Style : Modern

Switch Type : On/Off switch & Touching the lamp

Warranty : 2 years

## How to use

\* When plugging the table lamp in and turn on the line switch , then you can turn the lamp on/off by touching the body of the lamp.

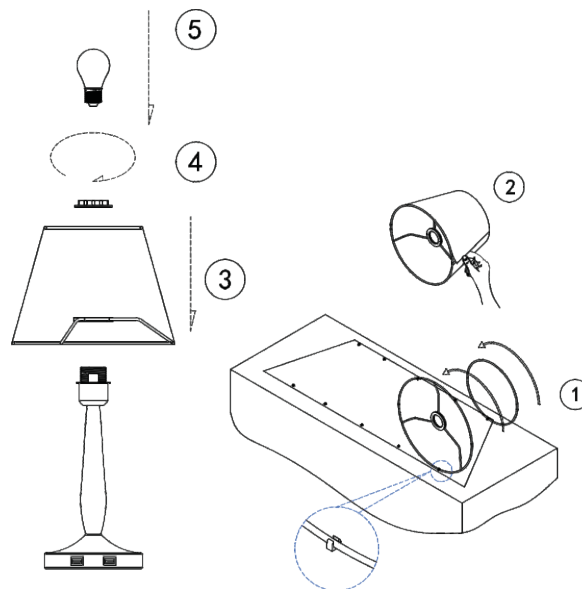
\* Three different brightness will be controlled through touching the lamp, so you can enjoy your own adjustable light.

## Precautions

- \* Please check the product is in good condition before installation.
- \* Please ensure the power is off before wiring and installing.
- \* Please use this product for indoor only.

## Easy Installation

Please as the following steps from ① to ⑤ for your reference:



① ② Place the two rollers on the lampshade in the same direction as shown in the figure, and press them on the plastic buckle to make them completely coincide, pay attention to the inner installation of the roller protruding part towards the lampshade.

③ ④ ⑤ Install the lamp shade on the bracket and tighten it then you can install the bulb to finish the table lamp.